

Release 4.9.2 (11.6.2026)

New features

Fixed problems

4.9.2-FP.1: Key import: Import of key pairs not possible

Due to a change in Release 4.9.1, it was no longer possible to import key pairs (pfx / p12 files)

Changes

- Internal libraries and components have been updated. This includes an update to the communication and cryptography modules to address security vulnerabilities. There are no functional changes

Release 4.9.1 (25.3.2026)

New features

Fixed problems

4.9.1-FP.1: MaBiS: APERAK generation for PARTIN messages failed

The processing of PARTIN messages (master data exchange) was faulty, meaning that the APERAK could not be generated for confirmation

4.9.1-FP.2: SAGA Import: Error message displayed in the main view despite normal operation

Since version 4.9.0, a display error has occurred in the main view during the SAGA download. When the SOPTIM AS4 Gateway download was enabled, the status was shown as "error", even though the download was working correctly

Changes

Release 4.9.0 (16.3.2026)

New features

Fixed problems

4.9.0-FP.1: The MaBiS File Scanner now only starts if there is a configured MaBiS extension

Errors occurred in the background of ComCT during scanning if the MaBiS module was not configured but the file scanner still searched for MaBiS files.

4.9.0-FP.2: SFTP-based file downloads caused errors with slow connections

A connection interruption or connections to the SFTP server that were kept open for too long caused errors during file downloads.

4.9.0-FP.3: Reading a communication history entry caused errors

If a file did not have a version number, this could cause an error when displaying it in the communication history.

Changes

- Update of the UI Look and Feel component
- Security update of the logging framework
- Update of the ComCT Installer
- Update of the communication framework

Release 4.8.0 (22.08.2025)

New features

4.8.0-NF.1 OAuth2 support for SMTP connections

Authentication via OAuth2 on SMTP mail servers (such as Office 365) is now possible..

Fixed problems

4.8.0-FP.1 PARTIN Import: PARTIN Import failed

The import of PARTIN messages for MaBiS extension failed.

Changes

- Improved logging for file download operations
- Setup and ComCT installation are now provided digitally signed
- Security Update of third party component commons-beanutils (CVE-2025-48734 (NVD))
- Security Update of third party component commons-lang3 (CVE-2025-48924)
- The Java runtime environment was updated to version 21.0.8

Release 4.7.0 (26.5.2025)

New features

4.7.0-NF.1 MaBiS: Necessary market changes: APERAK instead of CONTRL response messages

From 6 June 2025, MaBiS files must be confirmed with an APERAK message. This release supports the new APERAK version 2.1i. To send the new format, the version of the response message must be changed from CONTRL to APERAK 2.1i on the preferences

4.7.0-NF.2 MaBiS: Option for the automatic import of MaBiS files from SOPTIM AS4 SFTP (SAGA)

The option for automatic import can be set in the SAGA AS4 configuration in the MaBiS project settings. The frequency of the import can also be set in time unit seconds

4.7.0-NF.3 MaBiS: Option for the automatic generation of response messages

In the MaBiS project settings, you can now activate the option to automatically generate and send response messages (APERAK/CONTRL).

Fixed problems

4.7.0-FP.1 Import: Slow file import on some systems

Slow file import on some systems was fixed. The handling of file loading was optimized. First import might still be slower but will be faster afterwards

Changes

- Update of internal components for ESS/CIM and KISS files with minor improvements
- Minor update of the ui look and feel
- The Java runtime environment was updated to version 21.0.7
- The ComCT Installer was updated to version 1.14.1

Release 4.6.0 (14.01.2025)

New features

4.6.0-NF.1 MaBiS: Municipal utilities Flensburg available as balance coordinator

In the MaBiS module, Stadtwerke Flensburg is now available in the “BIKO” role and can therefore be used for importing MaBiS files and for confirmation with CONTRL messages.

Fixed problems

4.6.0-FP.1 AS4 connectivity : File conventions on file import

not all providers of AS4 solutions stick to the file name convention for tso responses (also not required anymore with AS4). ComCT used this file name convention to sort the responses before importing. With this release ComCT now no longer depends on this ordering. It analyzes the file content in order to sort the importable files by using the type, the version and then the creation time stamp of the importable file.

4.6.0-FP.2 MaBiS MSCONS Diff Checker correction

The findings for unknown metering points within a MSCONS message was erroneous. In some cases there were still unknown metering points found even if they were configured correctly in the master data.

4.6.0-FP.3 Corrections in error messages regarding sftp host key validation

In the error messages of a missing host key for host key checking feature (sftp connections) there was mentioned a missing certificate instead of a missing host key.

4.6.0-FP.4 Correction on certificate import when using the data store wizard

While creating a new data store with the data store wizard the storing of certificates or host keys failed.

Changes

- Update of the Entso-E lib to version 4.8.12 because of security vulnerabilities in XML processing
- default value for sftp connections regarding host verification is set to strict instead of none. This is because it is strongly recommended to use the host key validation for checking authenticity of the target server
- Update Java to 21.0.5

Release 4.5.1 (1.10.2024)

New features

4.5.1-NF.1 MaBiS File import: File name pattern for imported files no longer guaranteed

Due to communication via AS4, the file name pattern for MaBiS files is no longer guaranteed for many AS4 providers. ComCT has been adapted in this release so that deviating file names do not affect the correct processing of the file content.

4.5.1-NF.2 Schedule message & replies import: file name pattern for imported files no longer guaranteed

Due to communication via AS4, the file name pattern for timetable files is no longer guaranteed for many AS4 providers. ComCT has been adapted in this release so that deviating file names of XML timetable files or feedback messages (ACK, ANO, CNF) do not affect the correct processing of the file content.

Fixed problems

4.5.1-FP.1 SFTP / SAGA configuration current: Validation despite deactivated SFTP setting

If you use the SOPTIM AS4 Gateway (SAGA) service and have activated this in the transmission system operator settings, validation errors may have occurred, as the deactivated (and presumably not configured) communication setting SFTP was also validated.

4.5.1-FP.2 New error message if automatic AS4 SFTP import is active without configured server

If you have activated the automatic import of SAGA under the directory settings and have not configured any SAGA AS4 settings, a corresponding error message now appears

4.5.1-FP.3 Duplicate entry in control area combo boxes

The control area 10YES-REE-----0 was available in the combobox selection dialogs twice

Changes

- Update of the internal component ComFramework to version 4.3.13.0-3
- Update of the Installer component to version 1.12.0
- Update of the Entso-E Lib to version 4.8.7

Release 4.5.0 (12.6.2024)

New features

4.5.0-NF.1 Create better visibility of new files in the MaBiS directory

With this release, a new status display is shown in the ComCT import area of the main view, so that users of the MaBiS module have a quick overview if new EDIFACT files are available in the MaBiS module.

4.5.0-NF.2 New standard Look & Feel

The new look & feel fixes a number of bugs. In particular, the bug fix/change from the last release 4.4.2: "4.4.2-FP.3 Java error when opening a file selection dialog under Windows" is now no longer necessary

Fixed problems

4.5.0-FP.1 Error during UTILMD master data Import

When extracting the metering points in the master data dialog, errors occurred with current UTILMD messages.

4.5.0-FP.2 SRQ dispatch for an unsent schedule message resulted in an error

An error occurred if a status request was to be sent for an unsent schedule message.

4.5.0-FP.3 Security gaps closed: CVE-2024-2985,CWE-400,CVE-2024-30172,CVE-2024-30171

The third party component for PKI (Public Key Infrastructure) has been updated and the corresponding security vulnerabilities have been fixed.

4.5.0-FP.4 Security gaps closed: CVE-2024-29131,CVE-2024-29133:

The third party component "commons-configuration2-2.8.0" was updated and closes the mentioned security issues.

Changes

4.5.0-CH.1 User guide generation changed

Manual creation has been switched to a "documentation-as-code" process. The output format is still PDF. The layout has changed.

4.5.0-CH.2 Renaming "SOPTIM AS4 over SFTP" to "SOPTIM AS4 SFTP (SAGA)"

The term "SOPTIM AS4 over SFTP" has been standardized in many places in the manual and in the application to "SOPTIM AS4 SFTP (SAGA)"

4.5.0-CH.3 Update Java runtime to 21.0.3

Update to latest version

Release 4.4.2 (21.3.2024)

New features

4.4.2-NF.1 Support of unencrypted OpenSSL PEM Private Keys

Private keys starting with "-----BEGIN EC PRIVATE KEY-----" that were unencrypted (without a passphrase) are now supported. Hint: It is always recommended to enter a passphrase.

Fixed problems

4.4.2-FP.1 SFTP connection test without host key resulted in error

With some certificate formats, an error message was displayed if the connection test was performed without specifying a host key.

4.4.2-FP.2 Storing private keys without password validation is now prevented

It was previously possible to save a private key without password validation.

With this version, password protected keys must first be validated so that the key can be used in subsequent calls without any upcoming error messages

4.4.2-FP.3 Java error on opening the File Chooser on Windows

An error message occurred in the application when certain icons were loaded in the dialog on Windows. This is a Java error and a workaround has been provided with this release.

As soon as a Java update fixes this problem, the workaround will be removed.

In the meantime, the file selection dialogue will look graphically different.

4.4.2-FP.4 MaBiS module: Setting and saving dispatch way for SOPTIM AS4 SFTP (SAGA) erroneous

When changing the active dispatch way from/to SOPTIM AS4 SFTP (SAGA), it could happen that the change was not saved correctly.

4.4.2-FP.5 Migration of ComCT 3.x to 4.4.x: Error on setting the host key validation field

When migrating a data store to the current version 4.4.x from an old data store, the default setting for the host key check policy was not set. This led to an error during the connection test.

Changes

Release 4.4.1 (7.2.2024)

New features

Fixed problems

4.4.1-FP.1 Correction of file name pattern for CONTRL messages

The generated file name pattern for CONTRL messages is not compliant with BDEW EDIFACT file name pattern. There is an underscore missing after the message type: CONTRL__SENDER_RECEIVER_DATE_ID.txt.

So far, the old pattern has been tolerantly accepted by email communication, but this may change in the future (AS4).

Changes

Release 4.4.0 (2.2.2024)

New features

4.4.0-NF.1

Revision of data model regarding MaBIS communication preferences. Each dispatch way setting is now kept if a switch is performed to another active dispatch way. This allows an easier switch between dispatch ways for testing purposes. Be aware that this introduces new data structure to the data store that might not function correctly using older ComCT versions.

Fixed problems

4.4.0-FP.1

Creation of a new data store failed during completion in combination with the AS4 configuration option the data store wizard completion missed some crucial data for finishing the data store creation. With this update this was solved. There is now the option to enter SOPTIM AS4 SFTP (SAGA) data during the wizard steps if applicable.

4.4.0-FP.2

CIM schedule profile: Auto completion for CIM field domain has set the party code instead of the area code. This resulted in rejected schedules from the tso. There was a workaround to set the correct values in the KISS file for domain and domain coding scheme on the ESS_INFO sheet.

4.4.0-FP.3

Performance: Main view did not respond quickly enough after file import There was a delay in updating the main view after an import process such that not all new states were shown directly after import.

4.4.0-FP.4

Performance: Quitting ComCT took longer than in previous releases With this release quitting ComCT is as quick as before.

Changes

Release 4.3.1 (19.1.2024)

New features

Fixed problems

4.3.1-FP.1

File import for MABIS and PARTIN files was not triggered. Clicking on the import button did not trigger the file import from the MABIS import directory.

4.3.1-FP.2

Error when sending MABIS/PARTIN files: Internationalised text component displayed on dispatch notification result dialog could not be found. This resulted in an error message and the dispatch notification result dialog was not shown.

Changes

Release 4.3.0 (10.1.2024)

New features

4.3.0-NF.1 PARTIN format support

With this release, we add support for the GPKE market process for the exchange of communication data with the EDIFACT format PARTIN, tailored to the ComCT user group.

PARTIN messages from market participants in the BIKO or TSO role can be read in and confirmed by generating and sending an EDIFACT CONTRL message. Contact data can also be maintained and sent to the respective market participant (TSO, BIKO role).

4.3.0-NF.2 Connection to [SAGA](#) (SOPTIM AS4 Gateway)

From 1 April 2024, all market participants will be required by the Federal Network Agency to carry out market communication for electricity and gas using the AS4 protocol.

SOPTIM offers the AS4 solution SAGA in the cloud for all market roles and processes - as a SaaS solution with a simple and scalable usage model.

ComCT offers a direct connection support with SOPTIM AS4 SFTP (SAGA), which makes it easier to send files and, above all, to collect response messages more easily and efficiently.

Fixed problems

4.3.0-FP.1

CVE-2023-48795: potential SSH vulnerability in 3rd party lib JSCH.

This requires an update of the internal SOPTIM Com-Framework library to version 4.3.10.2

4.3.0-FP.2

CVE-2023-6378: security patch update of logging component logback to version 1.4.14

Changes

- Update of the ComCT Java runtime version to 21.0.1
- Minor updates of several internal libraries to their current version
- Replacement of a deprecated library for the file import component

Release 4.2.1 (19.09.2023)

New features

Fixed problems

4.2.1-FP.1

Release process for ComCT 4.2.0 bundled incompatible components. Sending signed and encrypted mails was not possible.

Release 4.2.0 (8.9.2023)

New features

4.2.0-NF.1 SFTP communication support

ComCT now supports sftp communication.

4.2.0-NF.2 Replacement of the EDI processing component (MaBiS extension)

The new component requires less disk space and has a better processing performance

4.2.0-NF.3 More flexible logging

specific log information can now be enabled or disabled during runtime of comct

Changes

- Update of ComCT Java runtime to version 17.0.8
- Update of several libs to a current release

Release 4.1.2 (4.11.2022)

New features

Fixed problems

4.1.2-FP.1

Bug on saving TSO communication settings

Since version 4.0.0 there was an error on saving the system operator communication settings for mailing. The signature algorithm was always set to SHA-256 when opening the dialog. Saving the settings then has overwritten the previous setting for the signature algorithm.

Changes

Release 4.1.1 (21.10.2022)

New features

4.1.1-NF.1

Support of MSCONS 2.4a

The format has been in active use since 1 October. ComCT now fully supports this format. In previous ComCT versions there is a problem reading in certain date formats.

4.1.1-NF.2

Support of PRICAT 2.0a

The format has been in active use since 1 October. ComCT now fully supports this format after reading errors occurred in various places.

Fixed problems

4.1.1-FP.1

CVE-2022-42889 in Apache commons-text 1.9

Eine Sicherheitslücke in der verwendeten Bibliothek erlaubte das Einschleusen von Schadcode. Da ComCT sehr isoliert betrieben wird, ist das Ausnutzungsrisiko gering. Ein Update der Bibliothek verhindert diese Angriffsart nun vollständig

Changes

- Update of ComCT 4.1.1 Java runtime to version 17.0.5

Release 4.1.0 (24.08.2022)

New features

4.1.0-NF.1

MaBiS Module: CONTRL 2.0b

From 1st October 2022 onwards CONTRL 2.0b must be used for edifact communication. Every MaBiS message must be replied with a CONTRL in version 2.0b.

Fixed problems

4.1.0-FP.1

Fixed an issue with opening anomaly reports from the main overview in ComCT. Some states were not initialized properly, which caused an error while opening a related anomaly message.

Changes

- Update of ComCT 4.1.0 Java runtime to version 17.0.1
- Improved logging for analyzing key initialization issues
- Improved logging for analyzing of concurring Data Store access attempts

Release 4.0.5 (16.12.2021)

Fixed problems

4.0.5-FP.1

Update of the logging component Logback to version 1.2.8.

The update disables possible JNDI calls that led to a massive security vulnerability in another logging library Log4j2 (CVE-2021-44228). ComCT / Logback is not affected by this vulnerability to the same extent. Theoretically, however, it is possible before the update if an attacker gains access to the configuration files for ComCT logging on the ComCT user's computer.

4.0.5-FP.2

Update of the installer.

This update fixes a potential security vulnerability in the installer InstallBuilder. Potential malicious code could be injected if entries were made in the Windows registry or when calling the uninstaller. For details, see the official blog entry of the manufacturer: <https://blog.installbuilder.com/2021/10/installbuilder-2160-released.html#more>

Release 4.0.4 (04.10.2021)

Fixed problems

4.0.4-FP.1

Deriving the filename from the archive-name in case of missing meta-information.

Release 4.0.3 (8.09.2021)

Fixed problems

4.0.3-FP.1

Importing some *.gz files into ComCT failed.

Release 4.0.2 (23.08.2021)

Fixed problems

4.0.2-FP.1

Due to an incorrect reference, data was stored erroneously when sending status requests. As a result, the Data Store could no longer be opened. This bug fix makes it possible to open the Data Store again and the incorrect assignment has been corrected.

Release 4.0.1 (19.08.2021)

Fixed problems

4.0.1-FP.1

The default value for the compression type was not correctly adopted during the data store migration. When sending messages without previously changing / or explicitly setting the compression type in the transmission system operator settings, an error message therefore occurred

Release 4.0.0 (18.08.2021)

New Features

4.0.0-NF.1: CIM Support for Germany

With this release ComCT supports the new CIM formats that can be used optionally but that will be mandatory on the long term (ESS formats are still valid). ComCT now supports:

- CIM Schedule: IEC 62325-451-2:2014
- Acknowledgement: IEC 62325-451-1:2013
- Status Request: IEC 62325-451-5:2015

To switch to the new CIM formats switch the format in the ESS Profiles on the system operator settings. As a reminder: Please restrict the current valid profiles when you configure the new CIM profiles.

4.0.0-NF.2: GZip support

From October 2021 onwards German system operators demand gzipped nomination files delivered to the tso schedule management system. You can set the GZip compression in the system operator preferences.

4.0.0-NF.3: CIM Status Request - Acknowledgement confirmation

For CIM Status Requests German system operators will send an Acknowledgement. The Acknowledgement can be processed by ComCT and its content can be viewed in the file import summary dialog or in the communication history.

4.0.0-NF.4: Support for German Redispatch nomination

With this release you can import redispatch time series with business type A85 that are part of new German Redispatch 2.0 regulations. In KISS files use the sheet 'intern' for adding the time series and set the business type accordingly.

Fixed problems

4.0.0-FP.1

Reset of a schedule day did not work correctly in some time zones that did not match "Europe/Berlin"

4.0.0-FP.2

KISS dates in the time series column formatted as text were not imported correctly in some environments

Changes

- With ComCT 4.0.0 there is a new ComCT setup routine that will install / remove ComCT application.

Release 3.10.7 (23.03.2021)

Fixed problems

3.10.7-FP.1

KISS file import: Error message **The date is not in the schedule time interval** when ComCT is started on a client in a time zone ahead of CE(S)T

Release 3.10.6 (29.01.2021)

New Features

3.10.6-NF.1

MaBiS main view with automatic filter

The filter is set to automatically load and display the current MaBiS files

3.10.6-NF2

Java Update to Zulu 8u282

Fixed problems

3.10.6-FP.1

Communication settings: Checkbox activation "STARTTLS" fixed

The checkbox was activated by clicking on the text not on the checkbox

3.10.6-FP.2

UTILMD metering point import in the master data dialog did not work

An adjustment to process UTILMD 5.2a correctly was necessary

3.10.6-FP.3

Error on determining valid ESS profile

There was an error on determining the valid ess profile on the schedule day.

Release 3.10.5 (09.09.2020)

New Features

3.10.5-NF.1

Update of internal communication framework

Fixed problems

3.10.5-FP.1

Fix of an upcoming exception which was shown on the schedule message dialog when either in or out area is invalid.

3.10.5-FP.2

SRQ file name has not a valid pattern regarding the new german process description: "schedule messaging in Germany" Instead of <scheduleday>_TPS_<Sender>_<receiver>_SRQ_<creationtimestamp>.xml it must be: <scheduleday>_SRQ_<sender>_<receiver>.xml

Release 3.10.4 (11.08.2020)

New Features

3.10.4-NF.1

Show imbalances even if ACK of TSO does not contain imbalance notification

The ComCT internal imbalance notifications (icons on the left in a time series view) are always displayed, even if the system operator Acknowledgment does not contain any imbalance reason code.

3.10.4-NF2

Java Update to Zulu 8u265

Fixed problems

3.10.4-FP.1

Improved the scrolling behaviour of the mail setup panel within system operator setting.

Encryption settings like 'encryption algorithm' and 'key encryption' were not displayed because on some resolutions the layout was not appropriate and no scrollbar appeared.

Release 3.10.3 (31.03.2020)

New Features

3.10.3-NF.1

EIC validation on KISS Import

EIC codes within the file name and the file content will be validated. If there is a typo in the EIC code, those errors will now be shown more understandable.

3.10.3-NF2

New Status Request Template for the new Standard balancing group contract effective on 1.5.2020

There is a new ESR Template that must be used from 1.5.2020 onwards. You can change it in the ESS profile settings of the System Operator setup. Set the current ESR V1R0 Status Request valid until 30.4.2020 and let the new Template start on 1.4.2020 like the ESS profile for the schedules.

3.10.3-NF3

The release notes will now be generated and provided as PDF by a new technique

3.10.3-NF4

Java Update to Zulu 8u242

Fixed problems

3.10.3-FP.1

Import of KISS files in XLSX formatting failed for version 3.10.2

3.10.3-FP.2

Error in Cockpit day span selection: The month March 2020 was only shown with 30 days when you selected the whole month.

Release 3.10.2 (22.01.2020)

Fixed problems

3.10.2-FP.1

Processing of Import of Acknowledgement Reports with Time Series rejections failed

Release 3.10.1 (19.12.2019)

Fixed problems

3.10.1-FP.1

Default filter for calendar days showed only 4 days instead of 5 days on weekday Friday: Thursday to Sunday instead of Thursday to Monday.

3.10.1-FP.2

Schedule message import fails on 30.12.2019 and 31.12.2019 due to a formatting error in the target filename. The year was retrieved from the the calendar week instead of the real year value. So 30.12.2019 and 31.12.2019 are associated to calendar week 1 of 2020 thus the year value 2020 was used for the file name instead of 2019.

Release 3.10.0 (28.11.2019)

New features

3.10.0-NF1

New MABIS CONTRL message version CONTRL 2.0a. Valid from 1st December 2019.

Fixed Problems

3.10.0-FP.1

Signed mailing: Too many aliases were choosable in the master data dialog: for container formats also the aliases of the public key parts were shown and selectable.

3.10.0-FP.2

Usage of aliases with the same name must be prohibited.

Release 3.9.2 (05.11.2019)

New Features

3.9.2-NF1

Support of TLS V1.3 for SMTP connections

3.9.2-NF2

Java Update to Zulu 8u222

Fixed Problems

3.9.2-FP.1

SMTP connection tests with TLS based connections failed

3.9.2-FP.2

Removed no more valid protocols SSL, SSLv2 and TLS

3.9.2-FP.3

Import of schedule messages failed on systems with time zone < Europe/Berlin

3.9.2-FP.4

Added validation on required fields in the mail configuration dialog and improved the error message on missing keys during mail dispatching

Release 3.9.1 (31.07.2019)

Fixed Problems

3.9.1-FP.1

Porting the TSO mail settings resulted in an empty “mail privacy” setting such that initial mailing attempts resulted in an error. Fixed the problem by setting the default field value to “unsecured” such that by default the mailing behaviour is the normal mailing mode without signature and/or encryption

Release 3.9.0 (03.07.2019)

New Features

3.9.0-NF1

Added support for MaKo 2020 - the new market communication demands for schedule nomination by mail in Germany. Mails to German system operators need to be signed and later on encrypted. This release provides support for both demands

3.9.0-NF2

Introduction of new ESS Schedule Template that covers the changes that will be required for the new German balancing contract that will be effective on May 2020.

3.9.0-NF3

The certificate and keymanagement feature in ComCT and ComCT-MaBiS has been unified and centralized into the ComCT preferences. The MaBiS keys and certificates will be migrated once you open a Data Store with a configured MaBiS extension.

3.9.0-NF4

64-bit standard installation. ComCT will now be installed as 64-bit installation on Windows by default.

3.9.0-NF5

Update of Java runtime environment. Oracle Java will no longer be used and instead Azul Systems Zulu Java will be shipped with ComCT (current runtime version: 1.8.212).

Fixed Problems

3.9.0-FP.1

Adjustments on the des SMTP connection test. In some situations the test resulted in a successful connection dialog message even if there was a connection error.

Release 3.8.0 (25.05.2018)

New Features

3.8.0-NF1

Support of Y-Codes as balance responsible party according to German market requirement for any second balance party registered after the 01.06.2018. When you need to add an Y-Code just do it and use it like the already present XCodes. From a ComCT point of view it is only another balance party. Please refer to the German regulation text “Anpassung der Bilanzkreisverträge hinsichtlich der Nutzung von X-EIC und Y-EIC“: https://www.bundesnetzagentur.de/DE/ServiceFunktionen/Beschlusskammern/1BK-Geschaeftszeichen-Datenbank/BK6-GZ/2006/2006_0001bis0999/2006_001bis099/BK6-06-013/Mitteilung_Nr_1/Mitteilung01.html?nn=411978

Fixed Problems

3.8.0-FP1

Fixed an error message on KISS import with wrong positions/intervals: Instead reporting the error “96” there is now a more meaningful error description present

Release 3.7.1 (18.12.2017)

Fixed Problems

3.7.1-FP.1

MaBiS: The storing of the key encryption setting failed with the 3.7.0 release.

Release 3.7.0 (18.12.2017)

New Features

3.7.0-NF1

MaBiS: Added the possibility to choose signature algorithm on the basis of RSAPSS and to set the key encryption on the basis of RSAES-OAEP for the BIKO mail settings (refer to official requirement on German edifact communication rule: „Regelungen zum sicheren Austausch von EDIFACT Übertragungsdateien“ by edi@energy)

Release 3.6.4 (27.09.2017)

Fixed Problems

3.6.4-FP.1

MaBiS Key import dialog: Alias combobox must not be editable .3.6.4-FP.2 Schedule Message import (XML): Certain formatting of the XML file causes a failure during message import.

Release 3.6.3 (12.06.2017)

New Features

3.6.3-NF1

MaBiS: Possibility to configure the signature algorithm / encryption algorithm in the BiKo configuration for a secure email transmission

Fixed Problems

3.6.3-FP.1

NTLM authentication on email server not possible

Release 3.6.2 (18.05.2017)

General Informationen

This release implements the regulations listed in the document „Regelungen zum sicheren Austausch von EDIFACT-Übertragungsdateien“ (BDEW) from 01.10.2016. The regulations will come into force on 01.06.2017

New Features

3.6.2-NF1

MaBiS: signed / encrypted email transmission configurable per BiKo. For further details please refer to the user guide.

3.6.2-NF2

Base64 encoding of file attachments in emails possible. The configuration can be performed on the System Operator or BiKo (MaBiS). For further details please refer to the user guide.

Release 3.6.1 (30.11.2016)

New Features

3.6.1-NF1

New ESS profile for APCS (Austria)

Fixed Problems

3.6.1-FP1

TPS for Swissgrid is generated with wrong header

Release 3.6.0 (05.09.2016)

New Features

3.6.0-NF1

Consideration of the changes for Swissgrid balance group contract for November 2016: There is a new Profile in the ESS Settings for the system operators.

3.6.0-NF2

Optional usage of SSL/TLS for SMTP connection.

3.6.0-NF3

Update of the Java runtime to JRE 1.8.0_102.

Changes

Updated the splash screen and version image on the start page

Release 3.5.2 (24.03.2016)

New Features

3.5.2-NF1 Added new party code for CREOS Luxembourg. The current party code (x-code) for Creos: 10XLU-CEGEDEL-N3 is no longer valid. The new party code: 21X000000001333E should be used instead. For ComCT you have to configure a new system operator in the preferences and have to associate it to your balance responsible parties: Please configure the new system operator “21X000000001333E” like the currently configured system operator for Creos and deactivate the old Creos system operator with the party code “10XLUCEGEDEL-N3”

From this version onwards all KISS files that have the file naming like: “20160323_50XSOPTIM-1----R_10YLU-CEGEDEL-NQ_01.xls” will be mapped to the new party code such that the old associated system operator will not be associated to this message. For the case that you want to import old KISS data that should not be matched to the new party code please rename the KISS file to the following pattern: “20160323_50XSOPTIM-1----R_10XLU-CEGEDEL-N3_01.xls” and use the old party code as receiver identification.

Release 3.5.1 (09.03.2016)

Fixed Problems

3.5.1-FP1

Fixed issue on loading the communication history dialog with a technical acknowledgement: Error on retrieving the version number value.

3.5.1-FP2

Fixed issue on importing acknowledgement reports: the import process did not quit correctly when there is no corresponding sent schedule message for the imported acknowledgement report.

3.5.1-FP3

Fixed issue on resolving the schedule day for an acknowledgement report.

3.5.1-FP4

Improved the “reset balance day” feature. An internal data cache is now also cleared when the reset balance day action is performed.

3.5.1-FP5

Fixed an issue with generation of ESR V1R0 Status Requests.

Release 3.5.0 (01.03.2016)

New Features

3.5.0-NF1

Added a new german market participant: Bahnstrom. It is added as system operator and can be configured and used as such. For this configure the system operator with area code 11YRBAHNSTROM—P. The profile configuration is as follows: ESS V2R3 Default and ESR V1R0 profile.

3.5.0-NF2

Update to Java runtime to JRE 1.8.0_60

3.5.0-NF3

Support for Acknowledgment Report v5r1

Release 3.4.7 (04.05.2016)

Fixed Problems

3.4.7-FP1

Fix in the MaBiS extension: EDI files that did not contain the delimiter information could not be imported by ComCT. With this release those messages are expected to contain the default delimiter characters in the UNA segment: UNA:+,? '

Release 3.4.6 (02.12.2014)

Fixed Problems

3.4.6-FP1

Fix in the MaBiS extension: A leading zero in the edi release version field for the generated Contrl messages in ComCT 3.4.5 caused a rejection of the control messages by the BiKos.

Release 3.4.5 (28.11.2014)

Fixed Problems

3.4.5-FP1

Fix in the MaBiS extension: Contrl 2.0 generation problems fixed.

Release 3.4.4 (28.11.2014)

New Features

3.4.4-NF1

Dispatching dialog was extended by an additional filter option: “system operator”

3.4.4-NF2

Optimization on viewing data columns / switch from compact to detail view in the schedule message detail view.

3.4.4-NF3

Update of the Java runtime to JRE 1.7.0_71

Fixed Problems

3.4.4-FP1

Fixed a problem on importing a digital certificate file with an unexpected formatting of the property “issuer cn”.

3.4.4-FP2

In some situations the “reset balance day” feature caused a problem with an error message that the balance day could not be found.

3.4.4-FP3

Master password request dialog was not displayed in all necessary situations.

3.4.4-FP4

Processing of Excel files with negative values caused an error message.

3.4.4-FP5

MaBiS extension: Importing of UTILMD D11A 5.1b message versions were rejected by the import process

3.4.4-FP6

Resolved a problem on startup of ComCT. The batch script for starting ComCT was adjusted such that the parameters for starting ComCT are set locally

Release 3.4.3 (09.05.2014)

New Features

3.4.3-NF1

The maximum quantity of active import and postprocessing processes can now be defined in the startup configuration file in the ComCT installation folder.

3.4.3-NF2

Update of the Java runtime to JRE 1.7.0_55.

Fixed Problems

3.4.3-FP1

In some system environments there were errors in data store integrity and correct data storage in the correct daystate folders. This was caused by an issue of parallel processing of the data store saving process. The amount of parallel saving operations has been reduced.

Known Problems

On some multi-screen machines ComCT may return with an error from hibernation. ComCT (more precisely the third party module for the look & feel design) cannot restore the previous monitor where it was displayed. This may also be the case for users who try to connect by remote desktop connection. Known versions where this was reported: 3.3.8 – 3.4.3.

Release 3.4.2 (28.03.2014)

Fixed Problems

3.4.2-FP1

In some cases the application freezed and did not respond after the file import was finished and the switch to the main view should have been performed.

3.4.2-FP2

Update of the ESS / KISS component: The file import for KISS files is now again more robust against time values in the Time Series date field – however only a date in dd.mm.yyyy formatting is expected here.

3.4.2-FP3

When new partner balance parties were automatically added, it occurred that they were added more than once.

Release 3.4.1 (04.03.2014)

Fixed Problems

3.4.1-FP1

It was possible, that the redrawing of the Day States overview caused an error when trying to display a day state.

Release 3.4.0 (28.02.2014)

New Features

3.4.0-NF1

Extended options and parameters for ftp connection. In case of need it is now possible to define timeouts and some additional settings for ftp connections. Extended logging functionality helps finding connection problems.

3.4.0-NF2

Improved file import and file processing performance. Especially if the data store is located on a network drive. The overall performance of file import and file processing was improved significantly. The addition of partner balance parties during file import will now be performed automatically. You can change this option for each balance party in the preferences.

3.4.0-NF3

Acknowledgement Reports with status “Fully accepted” which may contain additional Reasons on Message Header level or in an Time Series Rejection element can now be displayed as warning, optionally. In the System Operator settings there is an additional checkbox to enable this option.

3.4.0-NF4

Update of the Java runtime to JRE 1.7.0_51

Release 3.3.8 (27.06.2013)

Changes

- Update to Java version JRE 1.7.0_25

Fixed Problems

3.3.8-FP1

MaBiS related change: Change in generated Contrl messages due to validation issues related to Tenne.

Release 3.3.7 (21.05.2013)

Fixed Problems

3.3.7-FP1

There were some problems with the signed mailing feature: The updated library for the encoding of the mail signature caused some problems.

Release 3.3.6 (16.05.2013)

New Features

3.3.6-NF1

The MaBiS module now contains a new view: You can now open and inspect Pricat messages.

Changes

- Major Update to Java 7: Java runtime is now JRE 1.7.0_21

Fixed Problems

3.3.6-FP1

The provision of a Status Request template for a system operator is now no longer mandatory, but a warning will be displayed if a Status Request template is missing.

3.3.6-FP2

The Contrl messages in the MaBiS view had a wrong ordering of the related market participants in the message body

Release 3.3.5 (08.02.2013)

New Features

3.3.5-NF1

The error-overview dialog has a new table component. You can now filter in more detail on the table columns.

Changes

Update of the Java runtime to JRE 1.6.0_39.

Fixed Problems

3.3.5-FP1

Nomination profile for TSO ELES was erroneous. The ESS profile was updated in the following way: The time series profile for external trade with capacities was updated to use the demanded Object Aggregation code A04.

3.3.5-FP2

The import of a Schedule Message with a non-configured System Operator resulted in an unhandled error in the application

3.3.5-FP3

The error overview dialog caused an unhandled error in the case that the related file is no longer available in the Data Store.

3.3.5-FP4

Opening the „Time Series Modified“ – Diff View of a Confirmation Report caused an error when the Confirmation Report view was opened from the File import summary dialog.

3.3.5-FP5

Error messages concerning the conversion and validation of KISS files were not displayed correctly in the file import summary dialog.

Release 3.3.4 (07.12.2012)

New Features

3.3.4-NF1

Logging capability is extended by a stopwatch feature for some core processes of ComCT. This covers file import, dispatching and save/load operations on data stores. By default the stopwatch feature is disabled. It can be activated by changing the configuration of the log file generation configuration file. For a performance analysis the log files can then be sent to ComCT support.

3.3.4-NF2

New ESS template „ESS V2R3 ELES, Slovenia“ added. The system operator ELES expects the code A08 – Balance responsible party (instead of A01 – Trade responsible party) for the field SenderRole

3.3.4-NF3

The Daystates table in the ComCT main overview is now replaced by a newer table component with improved system integration and smoother display and update performance.

Changes

Update of the Java runtime environment JRE to version 1.6.0_37

Release 3.3.3 (10.08.2012)

Fixed Problems

3.3.3-FP1

Auto completion for KISS Time Series Business Type intern / extern without capacity did not work correctly.

3.3.3-FP2

The compatibility issues with 3.3.0 were not fixed completely for some Data Stores. So additional effort was required to fix this issue.

3.3.3-FP3

When changing from Version 3.2.1 to 3.3.0 or 3.3.1 there are some issues with the import of a new schedule message version. Illegal modification was detected because of different Time Series identifications. This problem is fixed with this version.

Release 3.3.2 (-)

This version was an internal test version with more detailed logging capabilities and extended logging for detailed view of mail communication with mail servers.

Release 3.3.1 (06.08.2012)

New Features

3.3.1-NF1

Anomaly Reports and Confirmation Reports that can not be associated to a schedule message in ComCT can be displayed now by double clicking the file name in the File import result dialog. They are still handled as erroneous files but they can be displayed. Usually those messages occur when a partner nominated a schedule message and you did not yet nominated any schedule message

3.3.1-NF1: Manual provision of a value for the Senders Time Series Identification field for capacity limited nominations is optional now.

With this release an autocomplete mechanism for the Senders Time Series Identification is integrated, that can handle the special cases of Time Series that contain capacity data (Capacity Contract Type and Capacity Agreement Identification)

Fixed Problems

3.3.1-FP1

The 3.3.0 version stored a wrongly formatted Day State value. Thus old ComCT versions were not able to open a ComCT 3.3.0 Data Store and also the ComCT 3.3.0 version was not able to read some Day States saved with previous ComCT versions. This fix restores the compatibility with the pre-3.3.0 versions. Day States that were stored with ComCT 3.3.0 probably need to be reimported and require a manual restoring of the current state

3.3.1-FP2

The import of a PKCS12 file that was not password protected was not possible because ComCT expected the provision of a non-empty password.

Release 3.3.0 (20.07.2012)

New Features

3.3.0-NF1: ComCT MaBiS for traders extension

With this release there is a new core feature introduced to ComCT concerning the market rules for conducting settlement area billing in the electricity sector (refer to decision BK6-07-002 of Germanys Federal Network Agencies ruling chamber 6 - valid from 1st April 2011 – for details). The extension targets a small field of application of the MaBiS rules: The extension is of interest for traders who do not have any production or consumption balance parties in their portfolio. This should always result in zero valued time series in the MSCONS messages that are sent to the balance responsible party by the balance group coordinator. The ComCT MaBiS for trader extension assists those traders to check their files for zero valued metering data and fulfilling the MaBiS requirements by being able to reply to the EDI data by generating and sending CONTRL response messages. For further details please refer to the user guide

3.3.0-NF2: Rework of the digital signing feature

the internal components for dispatching schedule messages by mail and ftp are replaced by a new implementation. The replacement it is now possible to send digitally signed mails that are accepted by APG / APCS

3.3.0-NF3: Update of Swissgrid ESS V3R3 ESS profiles

According to the new rules for nomination in the swiss market (first tests will start on first of July 2012) the ESS message templates are changed to match the new requirements. With the changes the ESS profile ESSV2R3 swissgrid becomes obsolete.

3.3.0-NF4: Location of the license file is now configurable

In variance with the default license location (<ComCT installation directory>/license) you can now select a custom directory for depositing the license file.

Changes

- Update of the Java runtime environment JRE to version 1.6.0_33.

Fixed Problems

3.3.0-FP1

An unsent schedule message was marked as sent when a StatusRequest message was sent instead.

Release 3.2.1 (20.04.2012)

New Features

3.2.1-NF1 Revalidation of Day States in Total Summary

In the menu “View” there is now an option to revalidate the day states that are in focus by the selected time interval. This feature has been introduced because the version 3.2.1 introduces an additional data field in the data store that is overwritten by old ComCT versions. Thus the state of a CNF (display status “modified”, see 3.2.1-FP.1) in the total summary area might not be valid any more once the data store has been opened with an old ComCT version. Depending on the amount of days and balance parties visible in the total summary view the process may take a while, so use only when you are sure that the data store was opened with an older ComCT version. As a guideline you should always use the newer ComCT with a Data Store once you have updated your systems to the new ComCT version. A complete backwards- and upwards compatibility cannot always be ensured in all areas of the application when the software is further developed and new features demand more data to be saved.

Changes

- Die Einstellungen zum Anlegen von Logdateien wurden so reduziert, dass weniger Datenvolumen produziert wird und die Dateien regelmäßiger aufgeräumt werden.

Fixed Problems

3.2.1-FP1

In the total summary area of the main overview Confirmation reports with the state “modified” are now displayed with a yellow background when the Confirmation report contains modified Time Series. Since the calculation may take some time this information is stored after the import of the Confirmation report. But this information is lost when you open the Data Store with an older ComCT version. For this reason we introduced the “Revalidation of Day States”-function in the view-menu of the application (see 3.2.1-NF.1).

3.2.1-FP2

There were some problems on resetting the balance day multiple times. ComCT creates a backup folder for the resetted day and creates a new clean

day state folder. In some cases the old backup data were not deleted correctly which resulted into an error message.

3.2.1-FP3

The import of system operator responses that contained syntactical errors resulted in the rejection of all imported files in this import step, even if they had no import errors. The import dialog showed the same error message for all imported files

Release 3.2.0 (16.03.2012)

New Features

3.2.0-NF1 Confirmation Reports with the Reason Code “A63 = Time Series modified” can now

be viewed in more detail. Instead of the usual Reason Code View of the Time Series in focus there will now be a Time Series modified view, that shows the difference between the Time Series from the sent Schedule Message and the modified Time Series from the Confirmation Report

3.2.0-NF2 If required, you can now enter semicolon (or comma) separated email addresses in the address fields

3.2.0-NF3 The export format for imposed Time Series has been changed. It is now changed to

the official Time Series Template format also used in the KISS templates and KISS scheduling data. Systems that import the exported Time Series need to be adopted to the new formatting

Changes

- Update of the used Java Runtime Environment to JRE 1.6.0_31

Fixed Problems

3.2.0-FP1

Some TSOs send Confirmation Reports with Imposed Time Series but do not use the currently from ENTSO-E demanded Reason element. Since ComCT validates against official ENTSO-E file format, it rejected those Confirmation Reports because of its invalid format. ComCT is now more tolerant and accepts also Imposed Time Series without the Reason element

3.2.0-FP2

Acknowledgement Reports with Reason Code „A57 = Gate not open / closed“ without additional message reason codes for ACK Reject or ACK Accept

are now handled by ComCT as type ACK Rejected

Release 3.1.8 (20.01.2012)

Fixed Problems

3.1.8-FP1

FTP Connection test was not affected by passive FTP option

3.1.8-FP2

NNecessary update of Entso-E processing library:

- ACK v5r0 and ACK v5r1 were not parsed correctly and thus ComCT was not able to import such messages
- ANO and CNF messages with 0-Version numbers from Amprion could not have been imported

Release 3.1.7 (16.12.2011)

New Features

3.1.7-NF2 A new checking rule was added: When a KISS file an external time series contains

Business Type A03 but no value is entered for the fields Capacity Contract Type or Capacity Agreement Identification there will be an error message displayed.

Release 3.1.6 (25.11.2011)

Fixed Problems

3.1.6-FP1

Main overview showed CNF intern and extern time series not correctly. Production/Consumption were not considered in the time series count.

3.1.6-FP2

Improvement of KISS-Import fault-tolerance (trying to import message with not configured tso)

3.1.6-FP3

KISS-Import: Leaving the time series version field empty resulted in version 0. ComCT 3.1.6 now autocompletes empty time series version in KISS files to version 1

3.1.6-FP4

ANO-Information in the main overview was not removed correctly when CNF was imported

Release 3.1.5 (27.10.2011)

Fixed Problems

3.1.5-FP1

Negative values in a schedule message were not shown as error

3.1.5-FP2

Ess profile selection threwed an indexing exception when no profile was selected

3.1.5-FP3

Some changes to ESR v1r0

Release 3.1.4 (21.10.2011)

New Features

3.1.4-NF1 The TSO comboboxes are now searchable. Just select the combobox and enter

text. If you don't want to search for exact match, enter the "*" Operator and then search for the text.

Fixed Problems

3.1.4-FP1

Through switching internal components to ESS 3.3 the DocType path for Status Request 1.0 has changed. This caused an error message returned by some system operators

3.1.4-FP2

Switching internal components to ESS 3.3 caused some problems with Excel 2007 formats

Release 3.1.3 (13.10.2011)

New Features

Fixed Problems

3.1.3-FP1

A display problem occurred when adding several system operators in the preferences or in the wizard dialog. When the added system operator wasn't saved and new ones were added, all ESS profiles of the non saved system operators were set to the same setting

Release 3.1.2 (07.10.2011)

Fixed Problems

3.1.2-FP1

The text field in the dialog for exporting imposed time series did not display the export directory when an export directory was selected.

3.1.2-FP2

File name generation of the new Status Request V2R0 for the swissgrid was using the classic naming strategy and not the new swissgrid demanded format

3.1.2-FP3

A change in the internal processing of daystates was the source of an display error on the main overview: When importing a file in a non CET time zone the state of the imported file may not have been displayed on the correct message date.

3.1.2-FP4

The Status Request V1R0 was readed to the ESS profiles

Release 3.1.1 (04.10.2011)

New Features

3.1.1-NF1

The domain and the domain coding scheme will now be autocompleted for swissgrid too, but only, if the value is not already set in the KISS file.

Fixed Problems

3.1.1-FP1

An internal data problem was present for the ESS V3R3 Swissgrid profile. Instead of process type A17 process type A13 was set.

Important note: ComCT 3.1 brings some major changes on the processing of the ESS formats. Through these changes in this version there may occur some compatibility problems, when you open a data store in an older ComCT version. For example, the system operator profile data for the ess messages can not be processed by older ComCT versions. Thus saving the data store with the old ComCT version will remove the system operator ESS profile data. You have to reconfigure them when you open the data store in ComCT 3.1 again. Of course the older ComCT versions are not able to process day states that contain already schedule data or responses in ESS 3.3 format. A proper error message is shown.

Release 3.1.0 (30.09.2011)

New Features

3.1.0-NF1

The user interface was slightly revided and has some new graphical enhancements. For example the quick access of some dialogs by shortcuts

3.1.0-NF2

The SMTP server preferences dialogue offers a button for testing the connection to the provided SMTP server connection

3.1.0-NF3

When a schedule message contains a time series for cross-border nomination, that has no Senders Time Series Identification set, ComCT will reject this time series with an error message. ComCT currently can not create a unique identification for these kind of time series. The default created identification for normal external trades with unlimited capacity would lead to a constraint violation because the uniqueness of a time series identification can not be guaranteed. Thus the user has to set a Senders Time Series Identification manually. The identification has to be unique for the whole schedule message and all subsequent versions and has a maximum length of 35 characters

3.1.0-NF4

Localization: ComCT is now also available in german language.

3.1.0-NF5

Status Requests in version 2.0 are now supported.

3.1.0-NF6: Unterstützung von ESSV3R3::

Unterstützung von ESS V3R3 Nachrichten: Versand von Fahrplänen und Einlesen von Anomaly Reports und Confirmation Reports.

3.1.0-NF7

Support of ESS V3R3 messages: Sending of schedule messages and receiving of Anomaly Reports and Confirmation Reports in ESS v3r3 format is now supported.

3.1.0-NF8

Acknowledgement Reports up to new version 5.1 are now supported.

3.1.0-NF9

Extension of the system operator preferences: Introduction of „Profiles“ The preferences for the system operator have been extended by a tab to configure message profiles for each system operator. With a message profile the user can select which ESS version and which Status Request version has to be used for the specific system operator in a certain time period. For further information please see the user guide

3.1.0-NF10

With the introduction of the message profiles it is now possible to bind certain profiles to system operator specific message header formats of the output xml file. At first this feature is relevant for the swissgrid changes because they demand a new header in the XML-formatted schedule messages. Thus there are certain profiles available for swissgrid TSO exclusively.

3.1.0-NF11

Provision of a new KISS-Templates for the new ESS V3R3 fields

3.1.0-NF12

Support of the new and especially for the swissgrid nomination important Process Type A17.

Changes

Update of the used Java Runtime Environment to JRE 1.6.0_27.

Fixed Problems

3.1.0-FP1

A data problem prohibits the correct generation of an ESS V3R3 schedule for the swissgrid with the ESS V3R3 profile. The process type A13 is set instead of A17. A workaround is available: Set the process type A17 in the ESS_INFO Tab of the KISS file

Release 2.0.8 (28.01.2011)

Fixed Problems

2.0.8-FP1

ACK messages that are accepted can also have further information on time series level. ComCT has marked these time series red because it assumed error messages here. In case of an accepted ACK this is a little bit confusing. Thus ComCT now marks all reason codes on time series level yellow, except time series that contain reason code A20 for 'time series rejected' message, that is still marked red.

2.0.8-FP2

Improved error message when write access to the ComCT license folder is not available. When such an error occurs the user guide now gives some more hints how to fix this issue especially when using newer Windows versions like Vista or Windows 7.

2.0.8-FP3

Improved exception handling when Excel import has failed.

Known Problems

2.0.8-KP.1

Excel files may in some rare cases not be imported due to wrong formatting. The third-party module for reading in Excel data has problems with these special kind of format. A workaround is to open the file again and save it again as an Excel file

Release 2.0.7 (01.12.2010)

New Features

2.0.7-NF1

New Reason Codes added: * A78 = Sender identification and/or role invalid. * A79 = Process type invalid. * A81 = Matching period invalid. * A83 = Disagree with matching results. * A84 = Confirmation ignored due to higher version already received. * A85 = Confirmation without adjustment (time series have been matched without change). * A86 = Confirmation with adjustment (time series have been modified). * A87 = For action (only in intermediate confirmation time series need mutual agreement and action). * A88 = Time series matched. * A89 = Time series ignored (note: this can only apply to time series that are set to zero – see matching principles).

Fixed Problems

2.0.7-FP.1

An unknown reason code in a CNF message caused an error in the further processing and displaying of the new unknown reason code.

Release 2.0.6 (24.11.2010)

Fixed Problems

2.0.6-FP.1

A change in the date format of APG resulted in an error message in ComCT. ComCT rejected ACK messages because the new date format was rejected.

Release 2.0.5 (04.11.2010)

Fixed Problems

2.0.5-FP.1

Version updates of already sent time series with an capacity contract type / capacity agreement identification provided had an error that is now fixed. The following scenario will result in a wrong senders time series identification for time series 2 : Provided is one extern time series with version 001. It has a capacity agreement identification set.

Datum	05.11.2010
aus Regelzone(Out Area)	<EIC_Area_1>
an Regelzone(In Area)	<EIC_Area_2>
von Bilanzkreis(Out Party)	<Party_EIC>
nach Bilanzkreis(In Party)	<Party_EIC>
Absender/Bilanzkreisverantwortlicher (Balance responsible party)	
Version	<Party_EIC> 1
Business type	A03
Capacity contract type	A01
Capacity agreement identification	CAI-1
SendersTimeSeriesIdentification	TimeSeries 1 identification

The error described occurs, when the first message is sent to the TSO and a new version of the schedule message is imported with another time series added (in this case with an intraday contract type but same area and party configuration and only a different time series identification).

Datum	05.11.2010	05.11.2010
aus Regelzone(Out Area)	<EIC_Area_1>	<EIC_Area_1>
an Regelzone(In Area)	<EIC_Area_2>	<EIC_Area_2>
von Bilanzkreis(Out Party)	<Party_EIC>	<Party_EIC>
nach Bilanzkreis(In Party)	<Party_EIC>	<Party_EIC>
Absender/Bilanzkreisverantwortlicher (Balance responsible party)		
Version	<Party_EIC> 2	<Party_EIC> 2
Business type	A03	A03
Capacity contract type	A01	A07
Capacity agreement identification	CAI-1	CAI-2
SendersTimeSeriesIdentification	TimeSeries_1_identification	TimeSeries_2_identification

ComCT falsely overwrites the second time series identification with the time series identification from the already sent time series in the first schedule message during the import of the new version 002. In some cases this is a desired feature to retain the time series identification of the first sent version, but in this case the logic to compare the time series did not incorporate the fields for capacity contract type and capacity agreement identification, but only in- and out area and the in- and out party.

Release 2.0.4 (29.10.2010)

Fixed Problems

2.0.4-FP.1

When an extern time series in the same direction is provided twice (i.e. outArea A, inarea B, inParty C, outparty C) but with two different capacity agreement identification codes or capacity contract types, ComCT misleadingly detects the second time series as counterpart and checks the time series for netting which will fail in most cases and the Error “Not Netted” is displayed. Netting is now disabled for time series that have a cai set.

Release 2.0.3 (25.10.2010)

New Features

2.0.3-NF1

Supported Capacity Contract Types extended by the following Codes:

- A07 = Intraday contract
- A08 = Quarter yearly contract
- A09 = Semestrial contract
- A10 = Multiple year contract

2.0.3-NF2

Update of the used Java Runtime Environment to JRE 1.6.0_22

Release 2.0.2 (06.10.2010)

New Features

2.0.2-NF.1

Update of the used Java Runtime Environment to JRE 1.6.0_21

Fixed Problems

2.0.2-FP.1

A bug has been fixed, that a data store can be accessed from multiple users in write mode.

Release 2.0.1 (24.09.2010)

New Features

2.0.1-NF.1

ComCT is more tolerant against unknown Reason Codes

2.0.1-NF.2

ComCT is now able to handle schedules with Content Type PPP – production schedules. See the user manual for further information and usage

2			
3			
4	Process type	A01	default A01,
5	Message type	A01	default A01,
6	Content type	PPP	
7			
8			
<div> ⏮ ⏪ ⏩ ⏭ Info ESS_Info Extern </div>			

Extern	Datum	06.09.2010
aus Regelzone	10YDE-ENBW-----N	
an Regelzone	10YDE-ENBW-----N	
von Bilanzkreis(Out Party)	<EIC des Kraftwerks>	
nach Bilanzkreis(In Party)	<EIC des eigenen Bilanzkreises>	
Absender/Bilanzkreisverantwortlicher	<EIC des eigenen Bilanzkreises>	
Version	1	
Kommentarbereich	Business type	PPP
Capacity contract type		
Capacity agreement identification		
	internal notes	
	internal notes	
SendersTimeSeriesIdentification		

Fixed Problems

2.0.1-FP.1

CEE Reason Codes for ACK in the context of Capacity Agreement Identification /Capacity Contract Type appended: A62, A75, and A76.

Known Problems

2.0.1-KP.1

A bug has been reported, that this version allows multiple user write access to a data store. An update to version 2.0.2 is recommended!

Release 2.0.0 (06.07.2010)

This version introduces the requirement of licensing ComCT. A license can be purchased in combination with a service contract between the SOPTIM AG and the licensee.

New Features

2.0.0-NF.1

Support of schedule messages in Microsoft Excel 2007 *.xlsx format

2.0.0-NF.2

Warning of imbalanced schedules(Reason code A54: Global position not in balance) in time series overview can now be deactivated for each system operator when deactivating the checkbox “Show Balancing”

Identification	10XDE-RWENET---W
Area	10YDE-RWENET---I
	<input checked="" type="checkbox"/> Active
	<input checked="" type="checkbox"/> Need balancing
	<input checked="" type="checkbox"/> Show Balancing
	<input type="checkbox"/> Ignore missing time series
	<input type="checkbox"/> Send message zipped
Dispatch way	Email

Donnerstag, 1. April 2010							
Import	Dispatch		System Operator				
	Version	ACK	Version	TS	ANO	Missing CNF	CNF
001							

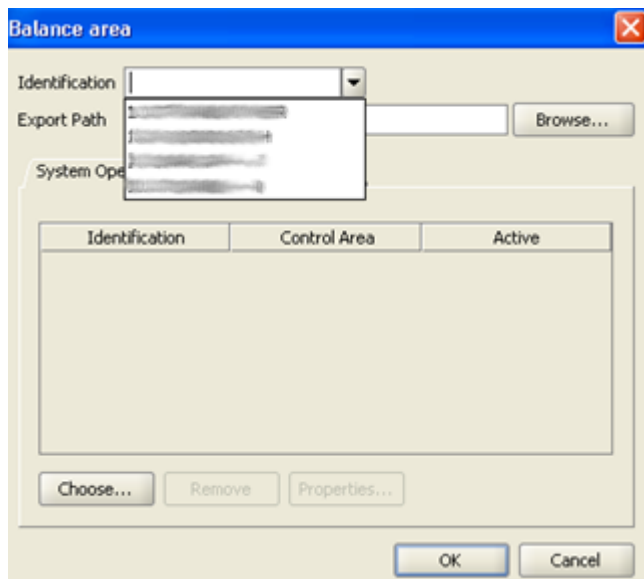
Donnerstag, 1. April 2010							
Import	Dispatch		System Operator				
	Version	ACK	Version	TS	ANO	Missing CNF	CNF
001							

2.0.0-NF.3

Update of the used Java Runtime Environment to JRE 1.6.0_20

2.0.0-NF.4

Licensed Balance Areas can be chosen for the Data Store in the Balance Area preferences. You can select the Balance Areas from the combobox that has replaced the previous input field for entering the EIC code for the Balance Area to add. Of course it is still possible to enter an EIC code in the field on your own.



Fixed Problems

2.0.0-NF.1

Senders time series identification is always generated even if it is set in the Excel Kiss file. .2.0.0-NF.2 Anomaly reports with incomplete period (zero value intervals left out) are now imported correctly, but will still show a warning message after import.

Known Problems

2.0.0-KP.1

A bug has been reported, that this version allows multiple user write access to a data store. An update to version 2.0.2 is recommended!

Release 1.1.10 (19.03.2010)

New Features

1.1.10-NF.1

Support of A13 Process type (post scheduling adjustments). A13 schedules are handled as default TPS schedule

Release 1.1.9 (08.03.2010)

Fixed Problems

1.1.9-FP.1

1.1.9 FP.1 Performance optimizations in I/O operations (datastore, file import)

Release 1.1.8 (25.01.2010)

Fixed Problems

1.1.8-FP.1

Location reference failure when copying datastore with default directory structure fixed

1.1.8-FP.2

Look & Feel fix of showing some dialogues with greater fontsize (125%) under Windows 7: All dialogue fields are now completely visible again.

1.1.8-FP.3

Reading email address out of some non-common certificate formats could lead to Null pointer exception is fixed

Release 1.1.7 (08.01.2010)

New Features

1.1.7-NF.1

ComCT now detects if Data Stores have been moved and tries to adopt the subfolders in the Data Store preferences to the new Data Store location automatically. Since this is not always possible, the user gets informed by a dialogue if a data store move has been detected.

1.1.7-NF.2

Internal updates of third party modules for mailing and cryptography extensions

Fixed Problems

1.1.7-FP.1

Sending of signed emails now works correctly or shows a proper error if an unknown problem occurs

1.1.7-FP.2

Signed emails are signed with – still standard – signing algorithm (compatibility issues with some email clients)

Release 1.1.6 (11.11.2009)

New Features

1.1.6-NF.1

Improved logging capabilities for better maintainability

Fixed Problems

1.1.6-FP.1

Data-Store saving Bug with loaded X.509 V3 key for email signing fixed

Release 1.1.5 (29.10.2009)

New Features

1.1.5-NF.1

New Java Requirements, Java 1.6 or later is now supported

Fixed Problems

1.1.5-FP.1

Some internal code improvements have been made for robustness and maintainability

1.1.5-FP.2

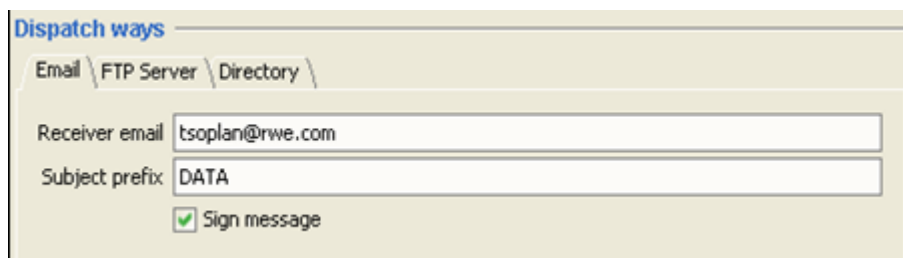
Reason Code “A63” is no more an unknown Reason Code and is handled properly

Release 1.1.4 (05.05.2009)

New Features

1.1.4-NF.1

ComCT now supports signed mailing. Hence if you send your schedule messages with the ComCT email feature, you are now able to sign your mails and the receivers can verify your identity.



Dispatch ways

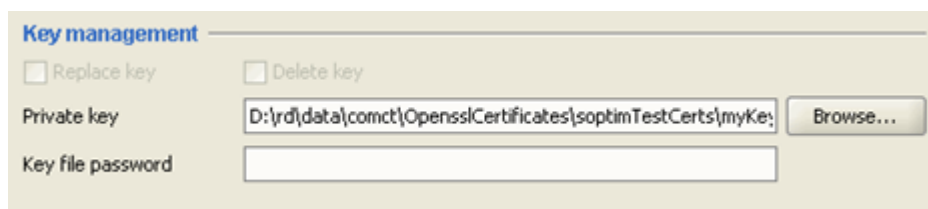
Email \ FTP Server \ Directory \

Receiver email: tsoplan@rwe.com

Subject prefix: DATA

☒ Sign message

For signed mailing you need to provide a certificate and a key. For further information consider the ComCT User Guide



Key management

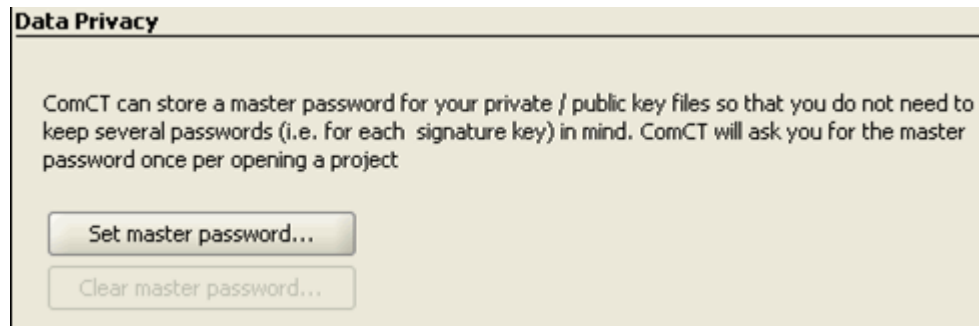
☐ Replace key ☐ Delete key

Private key: D:\rd\data\comct\Openssl\Certificates\sopimTestCerts\myKe Browse...

Key file password:

1.1.4-NF.2

Since the required key data for email signing represent sensitive data the access to your ComCT data store can be made password protected.



Fixed Problems

1.1.4-FP.1

Unusual display behaviour and possible “locking out ” of the ComCT preferences dialog with Java JRE 1.6 Update 12 and greater fixed. Nonetheless Java JRE 1.5 is the officially supported version (provided with the full installation package).

Bekannte Probleme

1.1.4-KP.1

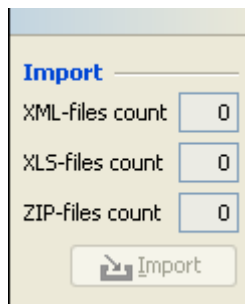
In some very rare cases it might occur, that a TPS file is partly overwritten with an ACK file. The problem is known and taken care of. Please contact the support if such a problem occurs

Release 1.1.3 (07.12.2007)

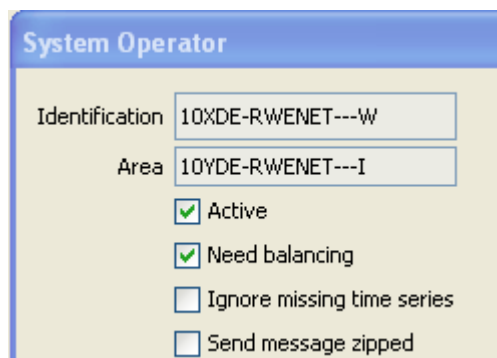
New Features

1.1.3-NF.1

The ComCT is now able to import and dispatch ZIP files. Therefore the import function of ComCT now counts (additionally to XLS and XML) any ZIP files in the import folder.



A screenshot of a software window titled "Import". It contains three labels with corresponding text boxes: "XML-files count" with a box containing "0", "XLS-files count" with a box containing "0", and "ZIP-files count" with a box containing "0". Below these is a button with a folder icon and the text "Import".



A screenshot of a software window titled "System Operator". It contains two labels with corresponding text boxes: "Identification" with a box containing "10XDE-RWENET---W" and "Area" with a box containing "10YDE-RWENET---I". Below these are four checkboxes: "Active" (checked), "Need balancing" (checked), "Ignore missing time series" (unchecked), and "Send message zipped" (unchecked).

The dispatch to each TSO can now be configured to use the new zip function.

Unsupported Features

1.1.3-UNF.1

The ComCT is now able to import a Time Series Identification. If the cell B14 contains the string “SendersTimeSeriesIdentification” the ComCT will import and process the given data. If there is no data, ComCT will generate automatically the default Time Series Identification. The Time Series Identification must be unique within the message and must not change from one message version to next.

	A	B
1	Extern	Datum
2		aus Regelzone
3		an Regelzone
4		von Bilanzkreis
5		nach Bilanzkreis
6		
7	Absender/Bilanzkreisverantwortlicher	
8		Version
9		Business type
10		Capacity contract type
11	Capacity agreement identification	
12		
13		
14	SendersTimeSeriesIdentification	
15		

Fixed Problems

1.1.3-FP.1

Unexpected ANO counts within the main overview have been eliminated

Release 1.1.2 (26.01.2007)

New Features

1.1.2-NF.1

The “message type” and “process type” within the ESS_Info are now not mandatory. If the fields are empty the corresponding default value will be used.

Release 1.1.1 (17.01.2007)

New Features

1.1.1-NF.1

New option to reset a balance day.

1.1.1-NF.2

New option to select time interval before opening a data store

1.1.1-NF.3

New option which allows to send a file with errors

1.1.1-NF.4

Improved support for ISDN-routers when sending files over FTP

1.1.1-NF.5

Added new validation rule: Insure the usage of the appropriate business type when using 11XFC-CONS-----0 and 11XFC-PROD-----E as party codes

1.1.1-NF.6

Changed the registration email address and changed the name of a sponsor.

1.1.1-NF.7

Fixed bugs in the date selection component.

1.1.1-NF.8

New option to mark a schedule message as sent without sending it to TSO. New option to mark a schedule message as accepted without importing of an acknowledgement.

1.1.1-NF.9

Added new functions to import ACK files. A new accepted ACK message will overwrite a already existing reject ACK message, but a new rejected ACK message will not be imported if a accepted ACK message is already there.

1.1.1-NF.10

Changed Confirmation Report view: All time series are now shown in one table. And imposed and modified time series are placed at the beginning of the table and marked red.

1.1.1-NF.11

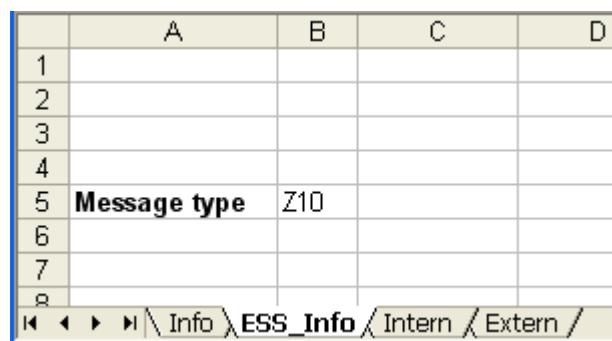
Added reusing a message identification from imported XML file when importgng a KISS file

1.1.1-NF.12

New Option to remove the last imported file (when the last import was an mistake for instance).

1.1.1-NF.13

The “message type” is now available within the excel file. Use the register “ESS_Info” and the cell B5 to set the message type to “Z10” for (Lost of Generation). The default value “A01” is still used if the cell is empty



	A	B	C	D
1				
2				
3				
4				
5	Message type	Z10		
6				
7				
8				

Release 1.0.9 (24.11.2005)

Fixed Problems

1.0.9-FP.1

Improved the FTP connection establishment. Changing the FTP connection timeout to 5 seconds caused too much problems, so we rolled back it.

Release 1.0.8 (21.11.2005)

New Features

1.0.8-NF.1

The message “process type” is now available within the excel file. Use the register “ESS_Info” and the cell B4 to set the process type to “A02” for intraday. The default value “A01” is still used if the cell is empty

	A	B	C	D
1				
2				
3				
4	Process type	A02		
5				
6				
7				
8				
9	Info \ ESS_Info / Intern / Extern /			

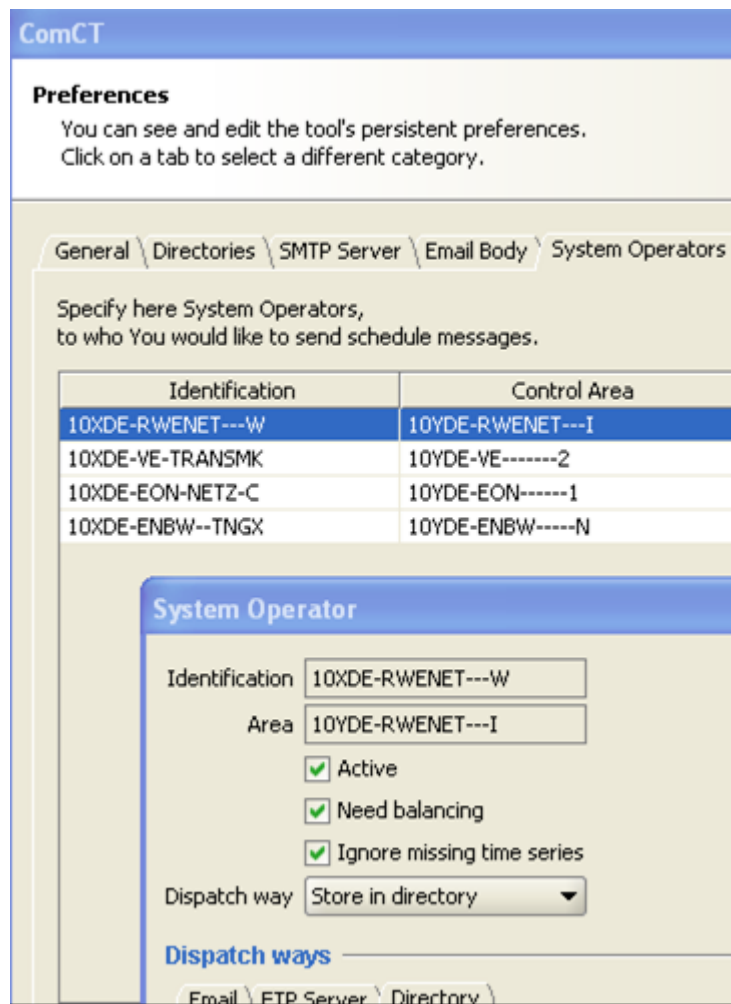
1.0.8-NF.2

The time series “business type”, the “capacity contract type” and the “capacity agreement identification” is now available within the excel file. Use the register “extern” and the cells column-9 to column-11. The default value “A06” for the business type is still used if the cell is empty

	A	B	C
1	Extern	Datum	14.11.2005
2	aus Regelzone an Regelzone von Bilanzkreis nach Bilanzkreis	aus Regelzone	10YDE-RVNET---I
3		an Regelzone	10YFR-RTE-----C
4		von Bilanzkreis	11X-BK-7-----1
5		nach Bilanzkreis	11X-BK-7-----1
6			TPS
7	Absender/Bilanzkreisverantwortlicher		11X-BK-7-----1
8		Version	1
9	Kommentarbereich	Business type	A03
10		Capacity contract type	A01
11		Capacity agreement identification	4711
12			
13			
14			
15	Kontrollsumme:	[MWh]	2016,133
16			
17	von	bis	MW
18	00-00	00-15	60.000

1.0.8-NF.3

There is now an option to ignore missing time series within a new TPS version. Use therefore the checkbox “Ignore missing time series” in the properties of each system operator.



1.0.8-NF.4

The time out of the FTP connection is now 5 second

1.0.8-NF.5

New Java Requirements, Java 1.5 or later is now required.

Release 1.0.7 (25.10.2004)

Fixed Problems

1.0.7-FP.1

Fixed bug: unable to create a new datastore

Release 1.0.6 (18.10.2004)

Fixed Problems

1.0.6-FP.1

Fixed bug: unable to add a new system operator.

Release 1.0.5 (06.10.2004)

New Features

1.0.5-NF.1

The new TSO of eastern Europe are included

Fixed Problems

1.0.5-FP.1

Missing decimal point when sending schedule messages over mail

1.0.5-FP.2

Not able to view a schedule message with 92 quantity values (alias 23h day)

1.0.5-FP.3

Improved handling of anomaly and confirmation reports

Release 1.0.4 (28.05.2004)

Fixed Problems

1.0.4-FP.1

Impossible to send a message or a status request if the last import failed

1.0.4-FP.2

Missing FTP server reply if the changing to the working directory failed.

1.0.4-FP.3

Anomaly report is not shown if in a time series anomaly the in/out area is missing

1.0.4-FP.4

Wrong time interval in generated status requests for 23h day

1.0.4-FP.5

Broken imports missed in the error list

1.0.4-FP.6

Imposed time series in version 0 should be allowed

1.0.4-FP.7

Quantity values from KISS and ETSO files treated different

Release 1.0.3 (06.01.2004)

New Features

1.0.3-NF.1

The KISS import function will now reuse any corresponding time series identification from the previous version (if one exists)

Fixed Problems

1.0.3-FP.1

The round problem within the balancing function is now fixed

Release 1.0.2 (12.12.2003)

New Features

1.0.2-NF.1

The EIC within a production or consumption time series will no longer be removed by the KISS import. (Important by nomination to VE)

Fixed Problems

1.0.2-FP.1

The balancing function does not regard decimal places

1.0.2-FP.2

If a nomination is not in balance, this will no longer be handled as an error. Its now just a warning

Release 1.0.1 (04.12.2003)

Fixed Problems

1.0.1-FP.1

Fixed handling of special characters in mail body and subject prefix

1.0.1-FP.2

Fixed windows size of the Confirmation Report

Release 1.0.0 (25.11.2003)

New Features

1.0.0-NF.1

Checking of the import directory is now configurable none

1.0.0-NF.2

The balancig validation is now configurable per system operator

1.0.0-NF.3

A email subject prefix can now be defined per system operator

1.0.0-NF.4

Better support for nominations in Austria (receiver role A05 for BKO; ignoring all BKO by identifying the receiver X-EIC from the KISS-filename)

Fixed Problems

1.0.0-FP.1

Fixed more time zone related bugs